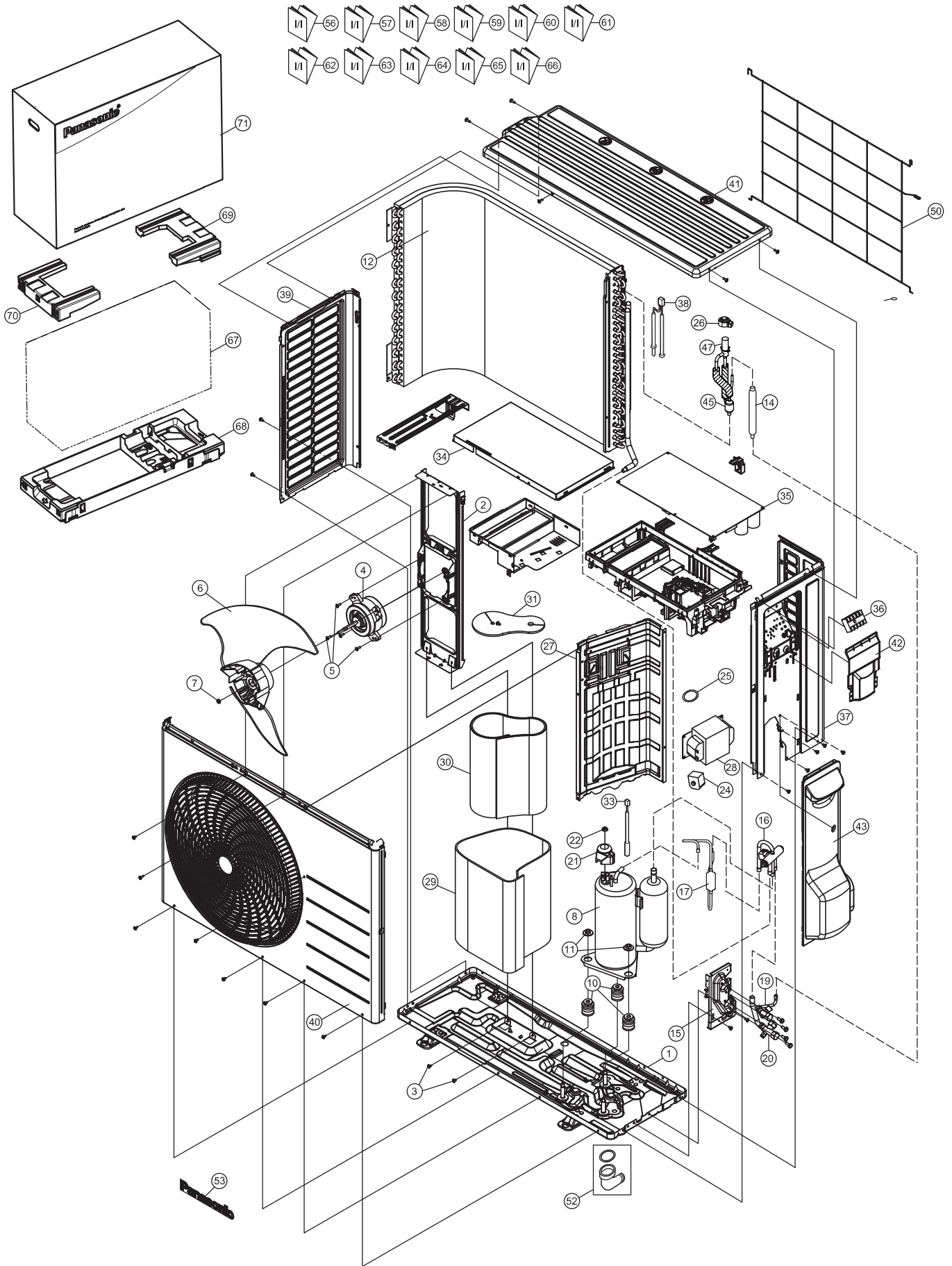


## 22.2.2 CU-Z42VKE



**Note**  
 The above exploded view is for the purpose of parts disassembly and replacement.  
 The non-numbered parts are not kept as standard service parts.

SAFETY	REF. NO.	PART NAME & DESCRIPTION	QTY.	CU-Z42VKE	REMARK
	1	CHASSIS COMPLETE	1	CWD52K1277	
	2	FAN MOTOR BRACKET	1	CWD541167	
	3	SCREW - FAN MOTOR BRACKET	2	CWH551217	
⚠	4	FAN MOTOR	1	L6CAYYYL0064	O
	5	SCREW - FAN MOTOR MOUNT	4	CWH55252J	
	6	PROPELLER FAN ASSY	1	CWH03K1066	
	7	NUT - PROPELLER FAN	1	CWH56053J	
⚠	8	COMPRESSOR	1	9RS102XMA21	O
	10	ANTI - VIBRATION BUSHING	3	CWH50077	
	11	NUT - COMPRESSOR MOUNT	3	CWH561096	
	12	CONDENSER	1	CWB32C3680	
	14	DISCHARGE MUFFLER	1	CWB121021	
	15	HOLDER COUPLING	1	CWH351023	
	16	4-WAYS VALVE	1	ACXB00-00130	O
	17	DISCHARGE MUFFLER (4 W. VALVE)	1	CWB121010	
	19	2-WAYS VALVE (LIQUID)	1	CWB021180J	O
	20	3-WAY VALVE (GAS)	1	CWB011367	O
	21	TERMINAL COVER	1	CWH171039A	
	22	NUT - TERMINAL COVER	1	CWH7080300J	
⚠	24	V-COIL COMPLETE - 4 WAY VALVE	1	ACXA43C00250	O
	25	O-RING	1	ACXB81-06510	
⚠	26	V-COIL COMPLETE	1	ACXA43C06110	O
	27	SOUND PROOF BOARD	1	CWH151274	
⚠	28	REACTOR	1	G0C392J00039	O
	29	SOUND PROOF MATERIAL	1	CWG302701	
	30	SOUND PROOF MATERIAL - BODY	1	ACXG30-08490	
	31	SOUND PROOF MATERIAL - TOP	1	CWG302719	
⚠	33	SENSOR CO - COMP TEMP	1	CWA50C2830	O
	34	CONTROL BOARD COVER - TOP	1	CWH131473	
⚠	35	ELECTRONIC CONTROLLER - MAIN	1	ACXA73C50180R	O
⚠	36	TERMINAL BOARD ASSY	1	CWA28K1298	O
	37	CABINET SIDE PLATE CO.	1	ACXE04C05190	
⚠	38	SENSOR CO - AIR TEMP AND PIPE TEMP	1	CWA50C3078	O
	39	CABINET SIDE PLATE	1	ACXE04-10010	
	40	CABINET FRONT PLATE CO.	1	ACXE06C02890	
	41	CABINET TOP PLATE	1	ACXE03-02880	
	42	PLATE - C. B. COVER TERMINAL	1	CWH131470	
	43	CONTROL BOARD COVER CO.	1	CWH13C1253	
	45	STRAINER	1	CWB11094	
⚠	47	EXPANSION VALVE	1	CWB051078	
	50	WIRE NET	1	CWD041200A	
	52	BAG - COMPLETE	1	CWG87C900	
	53	PANASONIC BADGE	1	CWE373439	
	56	INSTALLATION INSTRUCTION	1	ACXF60-33670	
	57	INSTALLATION INSTRUCTION	1	ACXF60-33680	

SAFETY	REF. NO.	PART NAME & DESCRIPTION	QTY.	CU-Z42VKE	REMARK
	58	INSTALLATION INSTRUCTION	1	ACXF60-33690	
	59	INSTALLATION INSTRUCTION	1	ACXF60-33700	
	60	INSTALLATION INSTRUCTION	1	ACXF60-33710	
	61	INSTALLATION INSTRUCTION	1	ACXF60-33720	
	62	INSTALLATION INSTRUCTION	1	ACXF60-33730	
	63	INSTALLATION INSTRUCTION	1	ACXF60-33740	
	64	INSTALLATION INSTRUCTION	1	ACXF60-33750	
	65	INSTALLATION INSTRUCTION	1	ACXF60-33760	
	66	INSTALLATION INSTRUCTION	1	ACXF60-33770	
	67	BAG	1	ACXG86-03760	
	68	BASE BOARD - COMPLETE	1	CWG62C1144	
	69	SHOCK ABSORBER - TOP RIGHT	1	CWG713415	
	70	SHOCK ABSORBER - TOP LEFT	1	CWG713416	
	71	C. C. CASE	1	ACXG50-48870	

(NOTE)

- All parts are supplied from PAPAMY, Malaysia (Vendor Code: 00029488).
- "O" marked parts are recommended to be kept in stock.